

# NEXUS TRANSFO

**Transformateur de distribution huile et sec**

**Générateur Homopolaire**

**Bobine de Point Neutre**

**Bac de rétention**

**Poste de distribution préfabriqué HTA**

**Câbles Moyenne Tension**

**Cellules Moyenne Tension**



## NEXUS TRANSFORMATEUR

Rue Romain Rolland 45100 Orléans - FRANCE

Mobile: 00 33 6 80 00 88 31

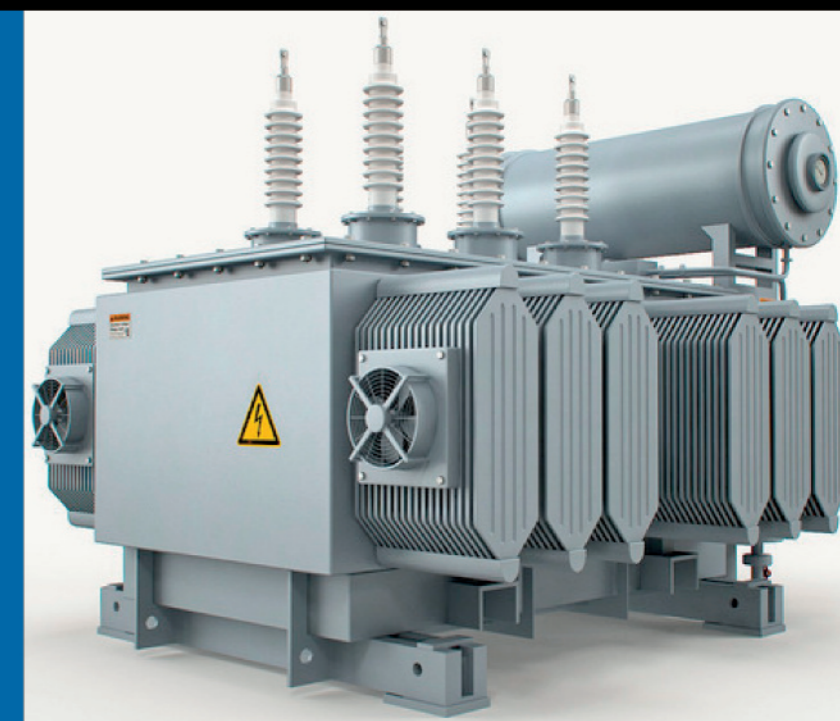
Tel + 33 (0)2 38 21 30 30

Fax +33 (0)2 38 21 30 31

Email: [nexus.transformateur@gmail.com](mailto:nexus.transformateur@gmail.com)

[www.nexus-transformateur.com](http://www.nexus-transformateur.com)

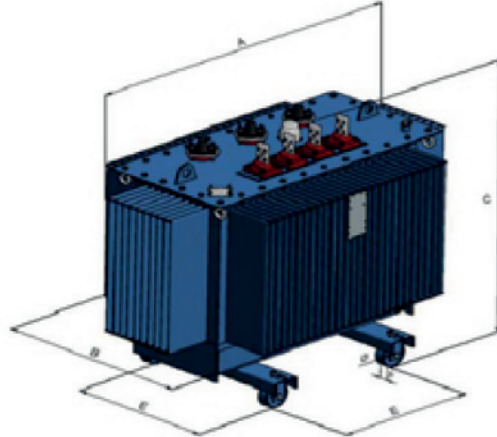
**TRANSFORMATEURS  
DISTRIBUTION & PUISSANCE  
DE 50 KVA JUSQU'À 160 MVA**



**OIL IMMERSED TRANSFORMERS**  
50 to 2500 kVA (AI/AI)  
Insulation level ≤ 24 kV and 36 kV  
EcoDesign (EU) 548/2014



# NEXUS Transfo



Potencia	S.24 kV		S.36kV		STANDARDS
	P <sub>0</sub>	P <sub>K</sub>	P <sub>0</sub>	P <sub>K</sub>	
≤1000 kVA	Ao	Ck	Ao + 15%	Ck + 10%	In accordance with standards: • IEC 60076-1 // • EU 548/2014
≥1250 kVA	Ao	Bk	Ao + 15%	Bk + 10%	

COMMON ELECTRICAL CHARACTERISTICS (*)	
Frequency	50 Hz
Vector group	Dyn5 or Dyn11
Primary voltage (at no load)	6kV (up to 1000kVA) to 36 kV
HV tapping range (off-load)	3 to 7 positions (2,5%)
Secondary voltage (at no load)	380 to 440 V (Ph-Ph) 220 to 254 V (Ph-N)
Ambient temperature (Max.)	40 °C
Altitude above sea level	≤ 1000 m
Routine test (1)	Included
Type test (2)	Optional (quotable)
Special test (3)	Optional (quotable)

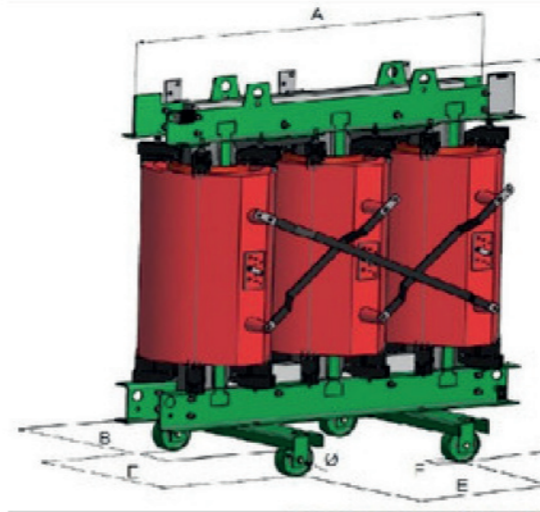
**ELECTRICAL CHARACTERISTICS FOR INSULATION LEVEL ≤ 24 kV (\*)**

Rated Power kVA	50	100	160	250	315	400	500	630	800	1000	1250	1600	2000	2500	
Rated primary voltage (dual voltage on request)	6 to 24 kV													10 to 24 kV	15 to 24 kV
Rated insulation level	7,2 kV BIL(60/20kV); 12 kV BIL(75/28kV); 17,5 kV BIL(95/38kV) or 24 kV BIL(125/50kV)														
Losses W	no load losses	90	145	210	300	360	430	510	600	650	770	950	1200	1450	1750
	load losses at 75°C	1100	1750	2350	3250	3900	4600	5500	6500	8400	10500	11000	14000	18000	22000
Rated impedance voltage %	4	4	4	4	4	4	4	4 or 6	6	6	6	6	6	6	
No-load current 100%Vn	3,5	2,5	2,3	2	1,9	1,8	1,7	1,6	1,4	1,3	1,2	1,1	1	0,9	
Noise level dB(A)	Sound power LwA	39	41	44	47	49	50	51	52	53	55	56	58	60	63
	Sound pressure LpA (1 m)	25	27	30	33	35	36	37	38	39	41	42	43	44	47
Approximate Dimensions (mm)	A	1000	1040	1140	1280	1320	1350	1420	1480	1620	1670	1900	2000	2440	2600
	B	700	740	780	820	840	860	880	900	1000	1060	1080	1160	1310	1410
	C	1300	1320	1360	1430	1500	1570	1640	1680	1690	1750	1940	1960	2060	2290
	E	520	520	520	670	670	670	670	670	670	670	820	820	820	1070
	F	40	40	40	40	40	40	40	40	40	40	70	70	70	70
	Ø	125	125	125	125	125	125	125	125	125	125	200	200	200	200
	Oil weight (Kg)	140	160	200	260	310	350	410	440	490	510	840	1060	1400	1780
Total weight (Kg)	600	780	1040	1280	1520	1750	2000	2250	2780	3120	3980	4900	5900	7900	

**CAST-RESIN TRANSFORMERS**  
100 to 3150 kVA (AI/AI)  
Insulation level ≤ 24 kV and 36 kV  
EcoDesign (EU) 548/2014



# NEXUS Transfo



Potencia	S.24 kV		S.36kV		STANDARDS
	P <sub>0</sub>	P <sub>K</sub>	P <sub>0</sub>	PK	
≤630 kVA	Ao	Bk	Ao + 15%	Bk + 10%	In accordance with standards: • IEC 60076-1 // • EU 548/2014
≥800 kVA	Ao	AK	Ao + 15%	AK + 10%	

COMMON ELECTRICAL CHARACTERISTICS (*)	
Frequency	50 Hz
Vector group	Dyn5 or Dyn11
Primary voltage (at no load)	6 to 36 kV
HV tapping range (off-load)	3 to 7 positions (2,5%)
Secondary voltage (at no load)	380 to 440 V (Ph-Ph) 220 to 254 V (Ph-N)
Ambient temperature (Max.)	40 °C
Altitude above sea level	≤ 1000 m
Routine test (1)	Included
Type test (2)	Optional (quotable)
Special test (3)	Optional (quotable)

**ELECTRICAL CHARACTERISTICS FOR INSULATION LEVEL ≤ 24 kV (\*)**

Rated Power kVA	100	160	250	315	400	500	630	800	1000	1250	1600	2000	2500	3150	
Rated primary voltage (dual voltage on request)	6 to 24 kV														10 to 24 kV
Rated insulation level	7,2 kV BIL(60/20kV); 12 kV BIL(75/28kV); 17,5 kV BIL(95/38kV) or 24 kV BIL(125/50kV)														
Losses W	no load losses	280	400	520	620	750	900	1100	1300	1550	1800	2200	2600	3100	3800
	load losses at 120°C	2050	2900	3800	4540	5500	6410	7600	8000	9000	11000	13000	16000	19000	22000
Rated impedance voltage %	6	6	6	6	6	6	6	6	6	6	6	6	6	6	
No-load current 100%Vn	1,7	1,6	1,4	1,3	1,3	1,2	1,2	1,1	1	1	0,9	0,9	0,8	0,7	
Noise level dB(A)	Sound power LwA	51	54	57	58	60	61	62	64	65	67	68	70	71	74
	Sound pressure LpA (1 m)	37	40	43	44	46	47	48	50	51	53	53	54	55	58
Approximate Dimensions (mm)	A	1500	1400	1400	1500	1500	1600	1600	1700	1800	2000	2000	2000	2200	2300
	B	750	750	820	840	840	850	860	880	900	1000	1000	1000	1420	1420
	C	1230	1320	1350	1420	1480	1600	1720	1760	1900	2100	2250	2300	2350	2450
	E	520	520	670	670	670	670	670	670	670	820	820	820	1070	1070
	F	40	40	40	40	40	40	40	40	40	70	70	70	70	70
	Ø	125	125	125	125	125	125	125	125	125	200	200	200	200	200
	Total weight (Kg)	1120	1130	1200	1450	1650	1900	2100	2500	3100	3900	4300	4900	6200	7000

